

Corporate Plan: Annual Action Plan



Our Vision for South Somerset

A naturally beautiful and sustainable environment, which also allows business to flourish and good homes to be delivered. A place where our communities are safe, vibrant and healthy and have access to exceptional cultural and leisure activities.



2022 - 23



Our Values



Customers first - Designing plans and services around our customers



Community at heart - Enabling residents to support our communities and the environment we live in



Open and transparent - Actively communicating, engaging and listening to feedback



Innovative - Embracing innovation and technology to improve customer service and facilitate access to council services for all who need it



Getting things done - Empowering dedicated and flexible employees and elected members focussed on delivery



Working collaboratively - Working with partners to enhance outcomes for our communities

Introduction

South Somerset District Council One Team, Ambitious for South Somerset.

Great to work for

- * Agile and empowered staff
- * Inspiring people



Leading the way

- * Modern and resilient
- * Adaptable to change
- * Technology enabled



Excellent to work with

- * Business-like organisation
- * Efficient and effective



Delivering for our communities

- * Resilient services
- * Customer focused
- * Data driven
- * Proactive



What have we achieved? (2021-2022)



No mow project

Successful completion of SSDC's No Mow Conservation Verge trials in Milborne Port, Cucklington, Castle Cary/ Ansford, Ilminster and Yeovil. Demonstrating good practice in wilding green spaces, and engaging with communities to do the same.

1,953

Volunteering days

in 2020 - 2021 at our countryside sites at Yeovil, Chard and Ham Hill



NEW Chard Leisure Centre

with swimming pool, gym and soft play centre.



New Yeovil Recreation Centre Cafe and Community space

Opened July 2021



Investigated 166 abandoned vehicles

and removed 11 to help keep streets and neighbourhoods clean and attractive.

Yeovil won Silver for South West in Bloom

We have also supported over 10 "It's Your Neighbourhood" community groups annually as part of the In Bloom initiative.

1,650

trees planted across the SSDC estate and within our communities

Exceeding our 1,000 per annum target



£36,000

secured from Cultural Recovery Fund for Heritage for environmental protection and restoration of the monument at Ham Hill



Green Flag Awards retained

at Ham Hill and Yeovil Country Parks and Chard Reservoir Local Nature Reserve. Ham Hill also secured a Green Heritage Award.



Community Environment Champions

Engaging with a network of 70 Environment Champions covering 50 different parishes through events to share knowledge.



Awarded a South West in Bloom, **five star Best Park Award** for Yeovil Country Park



97.8%

of all recycling in 2020/2021 from Somerset stayed in the UK (99.4% of all plastics)



New Environment and Destination websites launched

www.southsomersetenvironment.co.uk
www.visitsouthsomerset.com

What have we achieved? (2021-2022)

Successful application

for Local Authority Delivery Scheme round 1 grant retrofit funding and the completion of energy improvements for 28 Park Homes across Somerset.

750



subscribers to our community environment newsletter, Get SuSSed. 12 issues to date.

Provided environmental support for business and communities by signposting to Government/Local Partnership schemes & producing The SSDC Green Business Directory



Provided employment support for businesses and individuals including setting up the South Somerset Opportunities Hubs.

Continued to measure and track the decrease in SSDC's annual carbon footprint; progressing priority projects that best deliver for the carbon neutrality target of 2030



Worked with Somerset Waste Partnership to roll out Recycle More

over the Summer despite the challenges of Covid and the national driver shortage. It is already seeing over 100 tonnes

Provided training and continued to support community environment projects including launch of a spring wildlife pack

£150k

Welcome Back fund administered and paid out



Provided economic support for businesses by signposting to economic development initiatives including M-Hub and the Growth Hub.



£10m+

Business Support Grants paid out to local businesses which will increase with Omicron support.



Completed a cycling and walking infrastructure plan for Yeovil



Made improvements to Cartgate Visitor Information Centre

creating a Gold in Somerset and Silver in SW England award winning hub for visitors and residents (South West England Tourism Excellence Awards)



Rebranded Community Heritage Access Centre to South Somerset Heritage Collection, relaunched with new website and digital archive. Promoted the collection and resources with Community Engagement.



Fully energised the 25MW Battery Energy Storage System (BESS) facility

Assisted 7 projects to achieve through provision of S106 monies

£89,255

awarded to 11 Community Grants covering Arts, Community Transport, Sports and Recreation, Group Development, Community activities and Community buildings



100%

renewable electricity energy tariff for SSDC electricity supply



Implemented an action plan based on the "Accelerated Housing Delivery in South Somerset" report



Environment

Priority 1:

To accelerate action to adapt to and mitigate the effects of climate change which includes reducing the Carbon footprint of the authority and enhancing the natural environment.

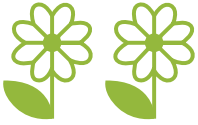
To keep South Somerset clean, green and attractive and respond to the climate and ecological emergency we will work in partnership to:

- Continue the delivery of the Environment Strategy action plan, reducing our carbon emissions by 10% every year, to reach carbon neutrality by 2030
- Deliver schemes to enhance the quality of our local environment and its resilience to adapt to climate change
- Protect South Somerset's landscape and to seek to increase tree cover within our communities
- Deliver the County wide Climate Emergency Strategy
- Deliver low carbon transport options including walking, cycling and electric mobility across South Somerset
- Support the development of environmental and ecological aspects within local, parish and neighbourhood plans, promoting Nature Recovery Networks across the district

What we plan to do - Environment



1



Yeovil: Working to partnership with our Towns and Parishes to deliver Yeovil in Bloom and support Crewkerne, Milborne Port, Henstridge, Haslbury in bloom

1 2 3

Yeovil, Martock & Chard: Delivery of Ecological and environment improvements



1



Yeovil: Support Community in delivering a pocket park in Westfield

3



Chard: Support the volunteer group at Chard Reservoir to deliver a self-guided children's trail at the Local Nature Reserve

4

Area East: Support the community in Area East to improve energy efficiency and decarbonise homes and buildings with Thermal Imaging camera trial and signpost to retrofit projects and funding opportunities

Ilminster

District-wide:



Relaunch and celebrate the River Parrett Trail

Continue to manage the authorities carbon pathway towards our 2030 goal

Programme to decarbonise SSDC buildings



Installation of a minimum of 50 Electric Vehicle chargers across SSDC Car parks



Use SSDC-owned land to contribute to nature recovery networks; creating a more resilient and connected landscape across South Somerset

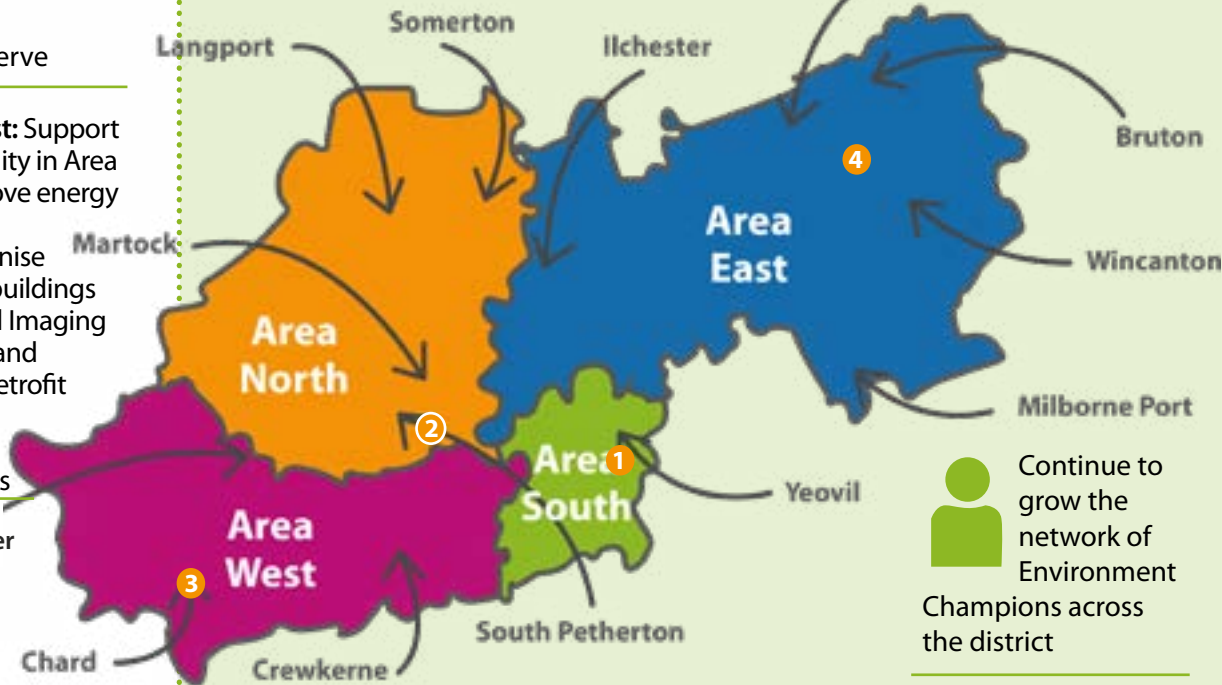


Supporting river restoration groups on Dodham Brook, Yeovil, and the River Cale, Wincanton, as well as wider environmental groups



Deliver the Wildflower Seed Giveaway, which will offer product and training to communities. Contributing towards the districts nature recovery

Continue to progress Somerset's Joint Climate Emergency Strategy and its actions



Continue to grow the network of Environment Champions across the district



Offer expansion of the No Mow Conservation initiative to appropriate parishes across the district

Work with Somerset Waste Partnership to pilot an electric refuse vehicle in South Somerset to understand which routes could be suitable for more electric vehicles

Embed the National Scheme for assessing Themes, Output and Measures (TOMs) into SSDC's procurement strategy, which attaches social value and carbon reduction to purchasing decisions

Submission and roll-out of National Lottery Heritage Fund grant to protect Scheduled Monument at Ham Hill and improve biodiversity



Healthy, self-reliant communities

Priority 2:

To enable healthy communities which are cohesive, sustainable and enjoy a high quality of life

- Work with partners to keep our residents safe and feel safe in their homes and communities
- Collaborate with local partners to reduce the impact of social isolation and create a feeling of community
- Work with local partners to support people in improving their physical and mental health and wellbeing and reduce inequalities
- Enable quality and inclusive cultural, leisure and sport activities
- Proactively support residents facing hardship and tackle the causes of economic & social exclusion, poverty and low social mobility

What we plan to do – Healthy & Self-Reliant Communities



4 5

Crewkerne and Chard: Enable a strong and sustainable community offer including a local Citizen Advice offer across SSDC

1



Ham Hill Country Park: At Ham Hill, progress National Lottery Heritage Fund project to deliver improved visitor facilities and engagement opportunities

2

Deliver three new youth facilities to replace existing skate parks in Yeovil

5



Chard: Provide sports pitch improvements

2 5

Chard, Yeovil: Deliver improvements to natural play trails at Yeovil Country Park and Chard Reservoir

2



Yeovil & Chard: Work with Yeovil & Chard Connect to tackle health inequalities

6



Wincanton: Support the Balsam Centre and collaborate in the development of new wellbeing initiatives

3 2



West Coker and Wyndham Park, Yeovil: Support the delivery of new or improvements to community halls

2 5 6

Wincanton, Chard, Yeovil: Support the implementation of the Active Communities Plan to increase access to improved leisure centres

2 5 6

Yeovil, Chard & Wincanton: Maintain local volunteer-led health walks and expand where there are identified gaps to reduce social isolation

District-wide:



Invest in the growth of Careline and test new initiatives to reduce social isolation



Deliver a programme of play days across South Somerset



Work with community partners to develop youth activities in areas of low social mobility

Invest in key local volunteer sector organisations (Spark and Citizens Advice South Somerset) to support local people and groups



Enable new community infrastructure through S106 and area community grants across SSDC

Using items from the South Somerset Heritage collection to deliver outreach opportunities and activities across the district

Invest in the South Somerset Families Programme to operate across the district



Support initiatives that tackle Food Resilience including our existing Food Banks and new provision such as Community Pantries and Fridges



Crewkerne: Work with partners to support the development of community transport



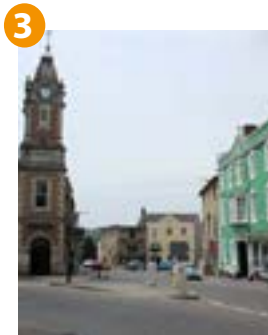
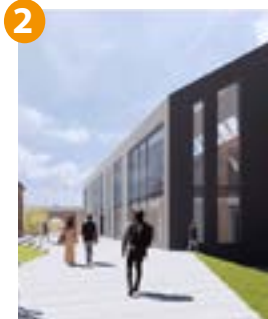
Economy and Covid-19 Recovery

Priority 3:

To assist businesses to recover from the Covid-19 pandemic whilst supporting growth within the South Somerset economy in partnership with other organisations.

- Support individuals and businesses through the pandemic, including response, recovery and growth initiatives (including any new grant schemes in the new financial year)
- Continue to deliver and prepare for Local Government Reorganisation transition, with other key stakeholders, the '8 point Enterprise, Innovation and Skills Action Plan'
- Work with commercial providers and public sector programmes to increase digital connectivity and associated skills throughout the district
- Enable and encourage businesses to become more environmentally sustainable (aligned to 2030 Climate Emergency commitments)
- Support the 'Bus Service Improvement Plan' particularly to promote Digital Demand Responsive Transport

What we plan to do - Economy & Covid recovery plan



Chard, Yeovil and Wincanton:
Three employment and skills hubs to support residents back into work/training

- 2
- 3
- 4
- 5
- 6
- 7
- 8
- 9
- 10
- 11
- 12



Martock, Langport, Crewkerne, Somerton, Wincanton, Castle Cary, Bruton, Ilminster, Chard, South Pertherton:
Support the Market Towns Investment Group to add with capital investment in our market towns

1 Yeovil: Support manufacturing hub (M-Hub) in partnership with Chamber of Trade.



1 Yeovil:
Continuation of Yeovil cycling and walking package



1 3 Yeovil & Wincanton:
Delivery of Public Realm works



2 Chard:
Completion of Chard regeneration scheme



2 Chard:
Continuation of Chard High Street Heritage Action Zone scheme

3 Wincanton: Joint bid with Mendip DC under the Levelling Up Fund to develop and deliver a co-working space and market square

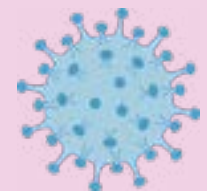
District-wide:



Continue support for local businesses, chamber of trade and town teams



Support Town Centre events and initiatives



Implementation of COVID economic recovery programmes that support local businesses



Places Where We Live

Priority 4:

To enable housing and communities to meet the existing and future needs of residents and employers

- Enable the delivery of good quality housing in appropriate places across all tenures, to meet community needs
- Maximise the provision of affordable housing
- Support rural communities and economies through delivery of affordable housing
- Prevent people losing their home and supporting people who are homeless to have a place they can call home
- Support communities to identify any housing need in their parish and support them to meet this demand, including supporting Community Land Trusts
- Proactively identify adaptable housing and community solutions responding to the consequences of the Covid-19 pandemic
- Promote and encourage environmentally sustainable housing, including to protect the Somerset Levels and Moors when determining planning submissions following advice from Natural England

What we plan to do - Places where we live



2 3



Chard & Wincanton:
Aiming to produce a local cycling and walking infrastructure

1



Yeovil: Develop the Octagon Theatre into a flagship Theatre and Cultural Hub

1

Yeovil: Yeovil Crematorium expansion

1 2 3



Yeovil, Chard & Wincanton:
Regeneration Programmes

2



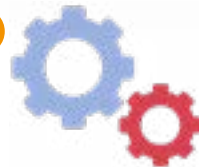
Chard: Plan development of Eastern relief road

1



Yeovil: Improvement to homeless/rough sleeper accommodation

4



South Petherton: Delivery of Passivhaus Scheme with partners

District-wide:



Support Neighbourhood planning as a tool to deliver suitable and appropriate local housing.



Cycling and walking routes across South Somerset



To Pilot a programme for additional planning guidance for Members

To support the communities to enable appropriate development in rural areas and support community land trust proposals

Continue to address phosphate mitigation measures relating to Somerset Levels and Moors RAMSAR (wetlands of international importance) site / Specific Protection Sites (SPA)

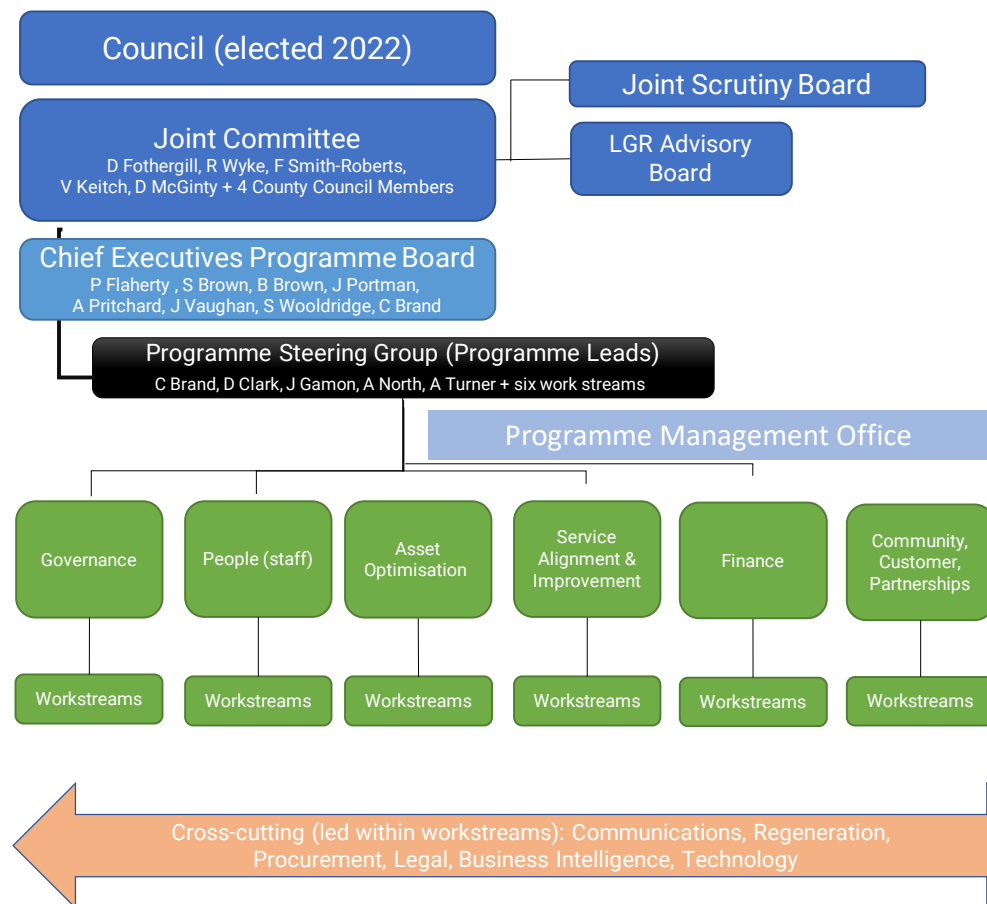
Local Government Reorganisation

Priority 5:

To effect a safe and legal transition to the new Somerset Council on 1st April 2023

To work in partnership across Somerset to secure a transition to a new Unitary Council for Somerset by 1st April 2023 whilst protecting essential services for South Somerset residents during the transition.

Officers are already involved at all levels of the programme and this will grow further before vesting day.



Local Government Reorganisation

Priority 5:

To effect a safe and legal transition to the new Somerset Council on 1st April 2023

Over the next 12 months, we will ensure and commit to:

- Empower officers to work with their peers to understand what activities are needed to bring five authorities together and, together, to do the preparatory work involved
- Contribute to the transition, whilst also safeguarding delivery of SSDC services to residents
- Work in partnership with the county and other district councils in Somerset to ensure that the residents of South Somerset are represented during the transition phase
- Identify those deliverables which are essential for the new Somerset Council to operate safely from 1st April 2023
- Influence and shape more ambitious/transformational activities for post-vesting day
- Support candidates who wish to stand in the elections with data and information for the electoral divisions they represent
- South Somerset District Council's preparation and delivery of a county wide election
- Preparing our staff for the transition ensuring that they are informed and supported during this period

Monitoring performance - corporate & public reporting

